

Apartment  
Building

Science  
Facility

Corporate  
Offices

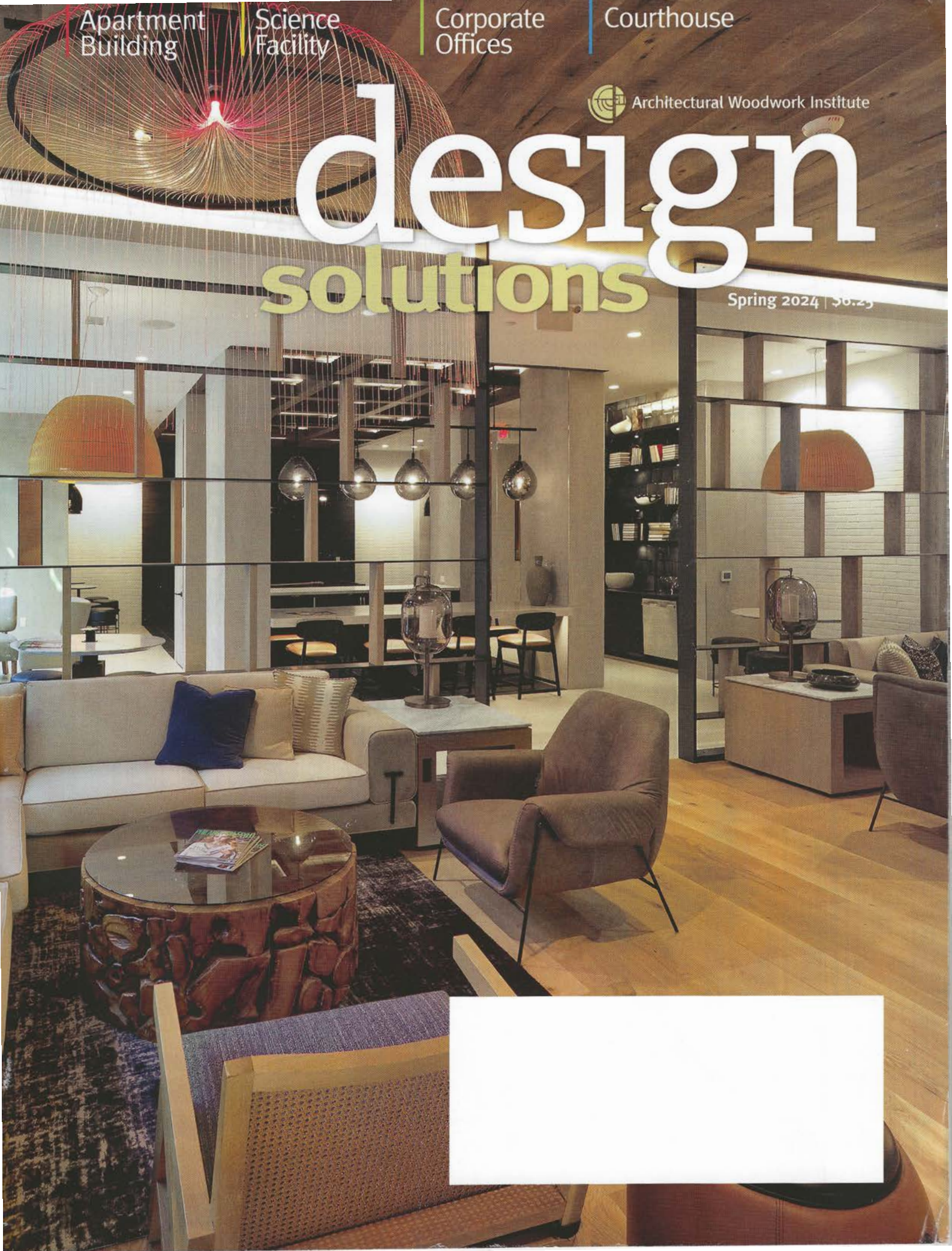
Courthouse



Architectural Woodwork Institute

# design solutions

Spring 2024 | \$6.25





# Sophisticated Offices.

A Modern Design in a Historic Chicago Building.







d

esigned as a place where cities and parks come together, the new office for Vizient, Inc. in Chicago's West Loop integrates a modern, sophisticated, and technologically forward aesthetic with the art deco detailing of the historic Old Post Office to create a space that inspires and awes.





As the nation's largest provider-driven healthcare performance improvement company, a variety of programmatic needs and elements were needed to accommodate the consolidation of two Chicago office locations across the 110,000 square foot workspace.

The architect for the new office was Partners By Design of Chicago. Architectural woodwork for the project was fabricated and installed by Wm. Huber Cabinet Works Inc., an AWI member firm also located in Chicago.

### **Historic Architecture**

Embracing the architecture of the Old Post Office, Partners By Design leveraged the large ceiling height to create a variety of unique architectural volumes throughout the space. These masses clad in an array of architectural finishes provide an approachable, human scale to the voluminous space. Additionally, drawing natural light into the space and providing several areas of extensive greenery throughout brings a sense of warmth and comfort to the large floor plan.

Community is at the core of Vizient's company values, and that was expressed architecturally with two large town hall spaces at each end of the floor plate. Connecting these two social hubs is The Boulevard, a transverse spine that anchors the entire workspace and offers the opportunity to connect, collaborate, and interact with fellow colleagues.



# at a glance

AWI MANUFACTURING MEMBER:

**Wm. Huber Cabinet Works Inc.**

LOCATION:

**Chicago, Illinois**

ESTABLISHED:

**1941**

FACILITY:

**28,000 square feet**

**Licensed QCP Manufacturer**

"The defining feature is a series of dramatic bent-wood ribs that are intended to mirror a green canopy of trees and help mark your way down the path," explains Arthur Garcia-Clemente of Partners By Design. "Hidden lights shine through the

slats and create a dappled light effect; the curved wood provides softness and a nod to branches and tree trunks; the separation of slats provides just the right amount of privacy between the boulevard and the nearby scrum zone; and the placement of the slats creates nook and private meeting spaces, while also demarcating a path that winds and zags. The meeting rooms, phone rooms and library along the boulevard are clad in urban materials of brick, steel, and tile; hanging globes highlight the path much like streetlamps would, and neon signs add a bit of edge."

The space is filled with a variety of work and leisure spaces to ensure the best possible employee experience including the Grand Town Hall, a light-filled multipurpose area overlooking the Chicago River.



ASH

## Awesome Ash

Huber Cabinet Works manufactured the unique curved Ash veneer slat walls along the boulevard, the custom veneer reception desk with a hot rolled steel face and Nero Marquina marble front, the laminate cabinetry and paneling in the cafes, planter boxes and banquette seating units throughout the space, reports William Huber.





"All of the wood veneer was flat cut White Ash which was stained to match the laminates," he says. "We try to keep our custom veneering all in house. We hand select the veneer flitches, sort so the proper bundles are being dedicated for the high-profile veneer items and do all our clipping, splicing and glue ups in house. This allows us to control exactly how we want each match to come together. For these unique curved slats, we maximized the width of the veneer and did a beautiful end match right at the apex of the radius."

## Noteworthy Boulevard

The "boulevard" is the long corridor where all the curved slats live and create the avenue for employees to move throughout the office, explains Huber. "Slats are three-inch thick, so all four corners needed to be mitered, which is always a difficult glue up on a curve. Some of the horizontal members had over 20' runs and the architect wanted to minimize the number of visible supports. To achieve this, we needed to coordinate with the general contractor to ensure we could lay out the boulevard early enough to run our steel cables up to the deck, prior to mechanical and ceiling elements being

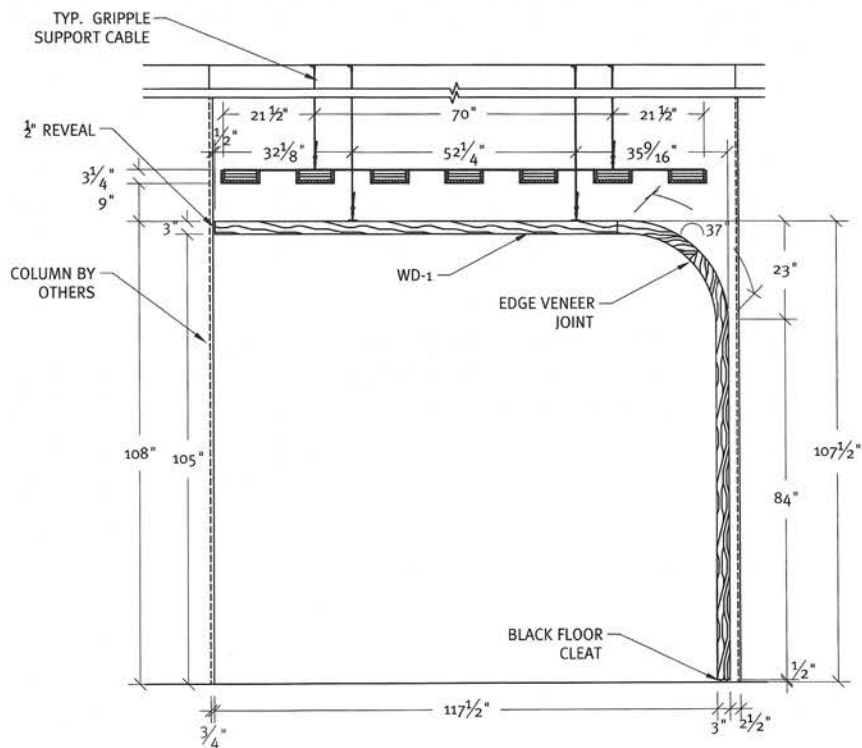




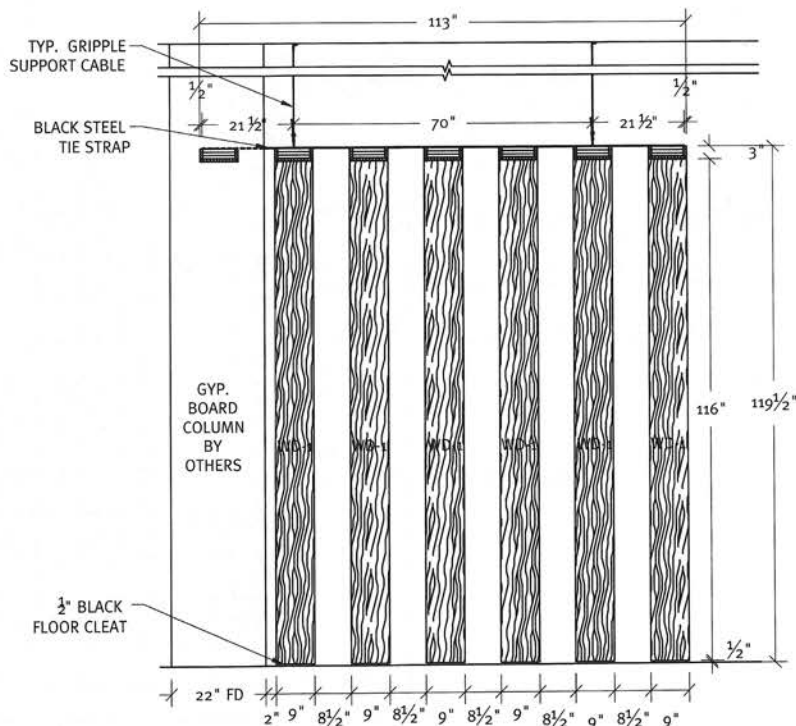
sprayed. This allowed for all the cables to match the white mechanical and ceiling elements, so they all blend. When all was said and done, the finished product was remarkable."

The architects knew what they wanted and let us engineer how the slats needed to be fabricated and supported, he continues. "We believe we have excellent millwork engineers in our CAD department, and they worked tirelessly with the team and our shop to make sure the details were constructable, and the supports were sufficient."

Garcia-Clemente agrees that the transverse spine running along the boulevard is particularly noteworthy. "With regard to the wood slats, the most challenging aspect was how to structurally support them with a minimum of vertical supports. We wanted them to appear self-supported, the way a tree would appear in nature."

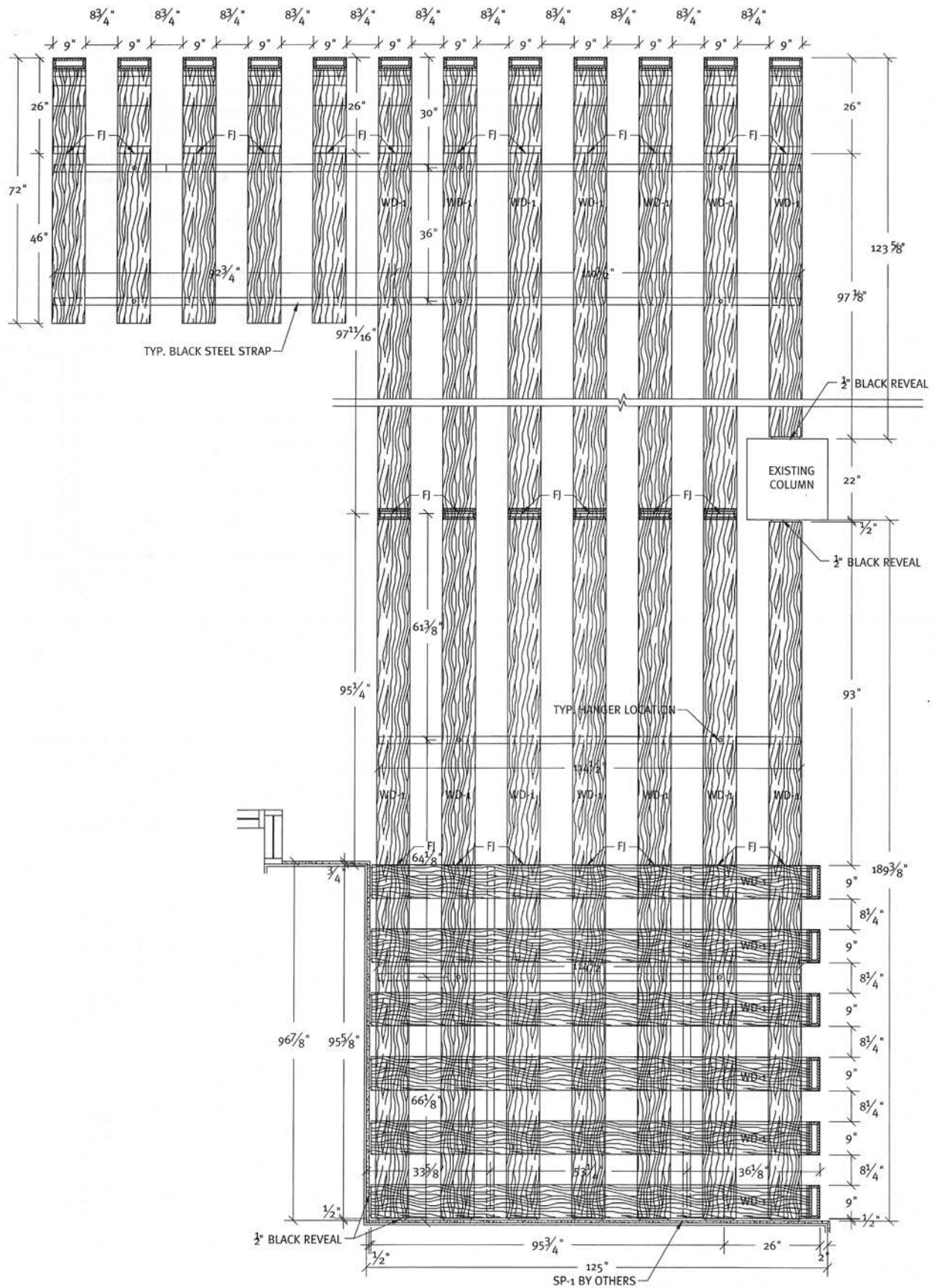


ELEVATION  
@ OPEN COLLAB



ELEVATION  
@ OPEN COLLAB





○ REFLECTED CEILING PLAN:  
@ OPEN COLLAB





## Strong Partnership

Huber Cabinet Works was an integral part of Partners By Design's team, and worked closely with us through the design process, says Garcia-Clemente. "They provided invaluable assistance regarding the wood type, the curve radiuses, and how to structurally support the spines."

We have a long history of collaboration with Partners By Design, notes Huber. "They trust us to bring their vision to life and work with us to come up with suitable solutions that will make the entire project team succeed. We are truly partners on projects. We respect what they bring to the table as a world class architect/design firm and vice versa. We know and respect each other's worth, and it makes working together successful and enjoyable."

“From project concept to the final installation, you can rest assured that Huber will make your millwork visions come to life.”

– William Huber, Founder  
Wm. Huber Cabinet Works Inc.

PROJECT:  
**Offices for Vizient, Inc.**  
Chicago, IL

PROJECT OWNER:  
**Vizient, Inc.**  
Irving, TX

WOODWORKER:  
**Wm. Huber Cabinet Works Inc.**  
Chicago, IL

ARCHITECT:  
**Partners By Design**  
Chicago, IL

GENERAL CONTRACTOR:  
**Skender**  
Chicago, IL

PHOTOGRAPHER:  
**Tom Harris**  
Chicago, IL